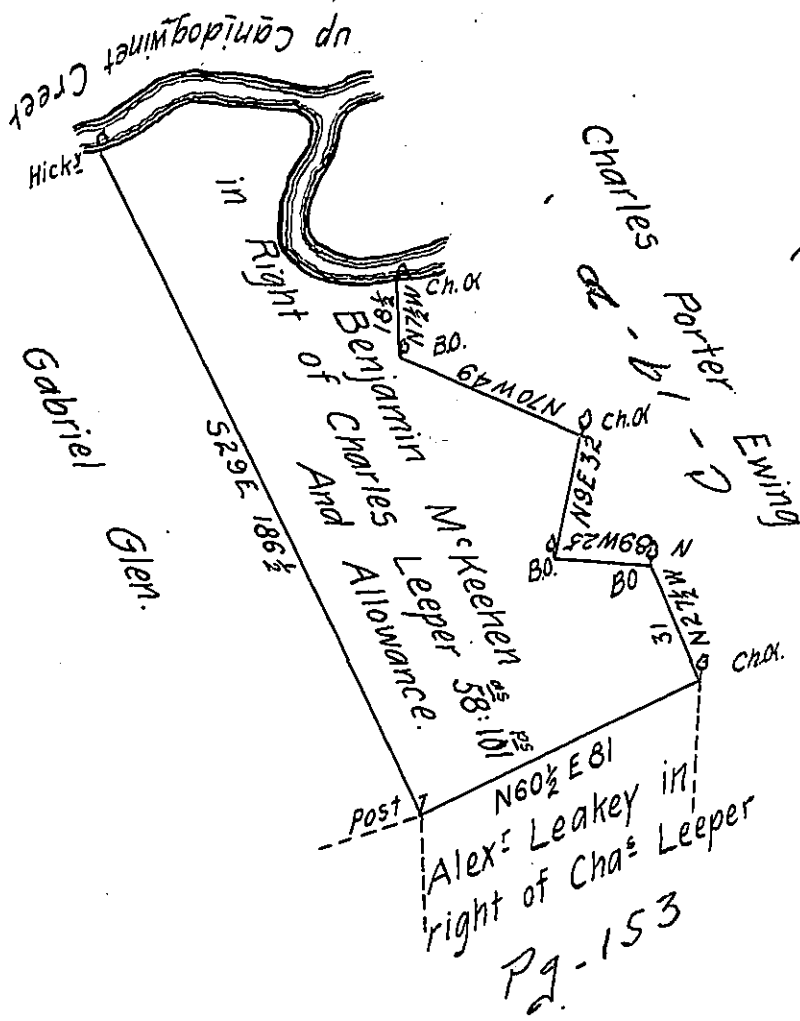


Courses & Distances up
 Canidogwinet Creek
 from the Chesnut Oak }
 N 86 W - 22
 N 38 W - 12
 N 5 E - 28 $\frac{2}{3}$
 N 87 W - 36
 S 50 W - 20 to
 A Hickory #
 118 $\frac{2}{3}$



The Draught of a Tract of Land situate in West Penns-
 borough Township Cumberland County Containing Fifty eight Acres
 and 101 Perches and Allowance of Six pCent for Roads & c^e
 Surveyed for Benjamin McKeen Dec^r 10th 1796 being part of
 a larger Tract of Land formerly Surveyed for Charles Leeper
 in pursuance of a Warrant granted to him dated April 15th 1786.
 p^r Sam^l Lyon D.S.

To Daniel Brodhead Esquire }
 Surveyor General of Pennsylvania }

IN TESTIMONY that the above is a copy of the original remaining on file in
 the Department of Internal Affairs of Pennsylvania, made
 conformably to an Act of Assembly approved the 16th day of
 February, 1833, I have hereunto set my Hand and caused
 the Seal of said Department to be affixed at Harrisburg,
 this.....thirtieth.....day of.....August.....1905.

Isaac R. Brown
 Secretary of Internal Affairs.